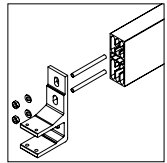
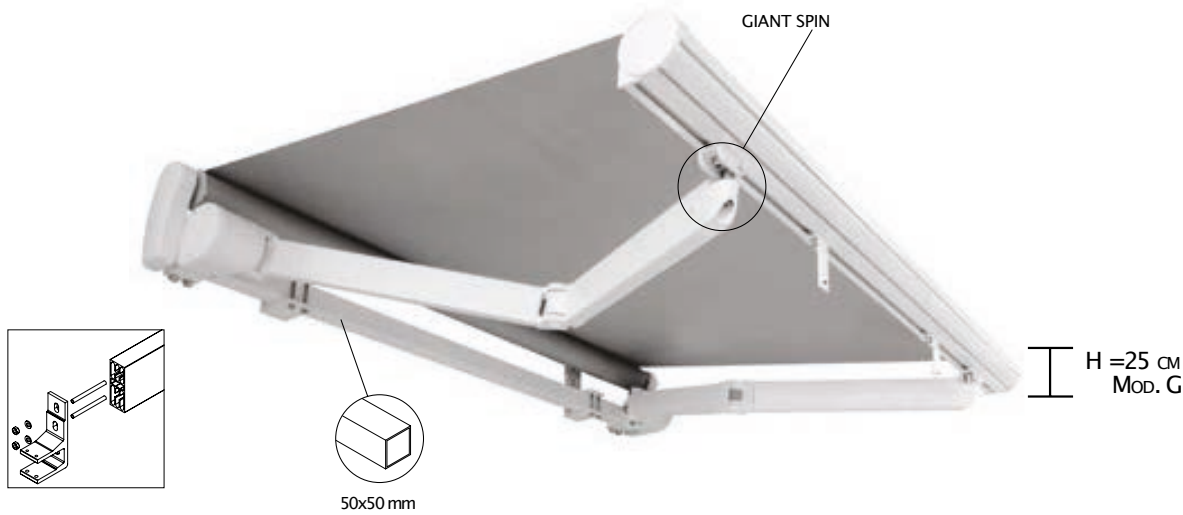


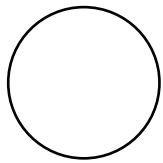
Futura B17 Technical Information

| | |
|------|-----|
| | |
| 1200 | 485 |
| 1200 | 360 |

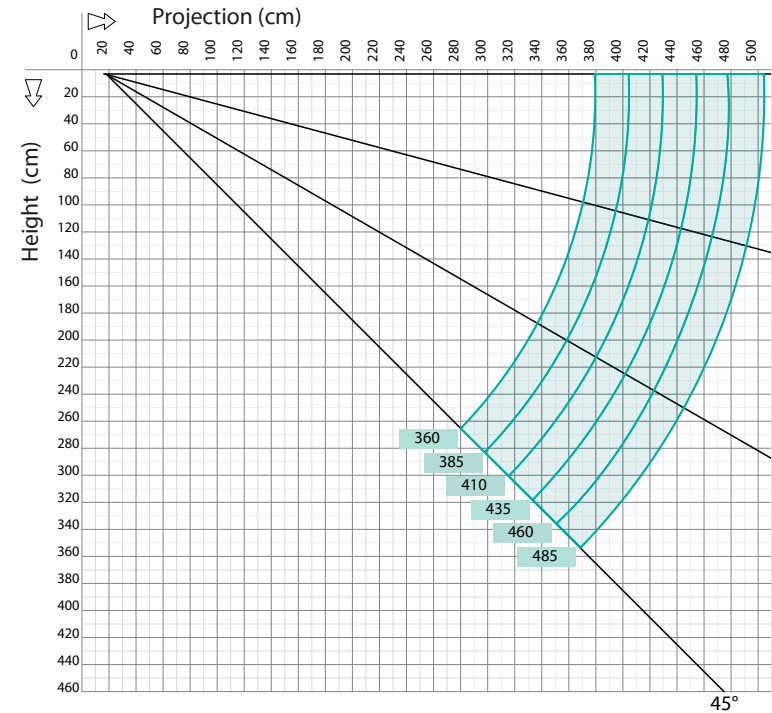
UK
CA **CE**



COLOURS RAL



Standard
9010 WHITE



Minimum awning
encumbrances - 1 pair arms

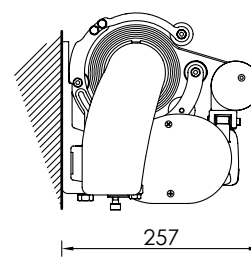
| cm | |
|-----|------------|
| | 2 Brackets |
| 360 | 430 |
| 410 | 480 |
| 435 | 505 |
| 460 | 530 |
| 485 | 555 |

N.B. Fabric welded as standard

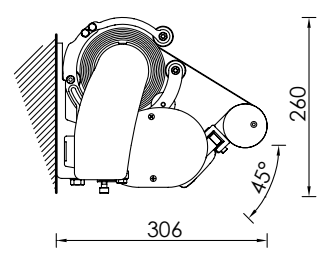
- Arms
- Wall-ceiling bracket
- ▶ Balance support
- Hood support

| cm | | 500 | 600 | 700 | 800 | 900 | 1000 | 1100 | 1200 |
|-----|---|-----|-----|-----|-----|-----|------|------|------|
| 360 | ■ | 2 | 2 | 3 | 3 | 3 | 4 | 4 | 4 |
| | ▶ | 5 | 6 | 7 | 7 | 8 | 10 | 10 | 10 |
| | ● | 1 | 1 | 1 | 1 | 1 | 2 | 2 | 2 |
| 410 | ■ | 2 | 2 | 2 | 3 | 3 | 4 | 4 | 4 |
| | ▶ | 5 | 6 | 6 | 7 | 8 | 10 | 10 | 10 |
| | ● | 1 | 1 | 1 | 1 | 1 | 2 | 2 | 2 |
| 435 | ■ | - | 2 | 2 | 3 | 3 | 3 | 4 | 4 |
| | ▶ | - | 6 | 6 | 7 | 8 | 10 | 12 | 12 |
| | ● | - | 1 | 1 | 1 | 1 | 2 | 2 | 2 |
| 460 | ■ | - | 2 | 2 | 3 | 3 | 3 | 4 | 4 |
| | ▶ | - | 6 | 6 | 7 | 9 | 10 | 12 | 12 |
| | ● | - | 1 | 1 | 1 | 1 | 2 | 2 | 2 |
| 485 | ■ | - | 2 | 2 | 3 | 3 | 3 | 4 | 4 |
| | ▶ | - | 6 | 8 | 8 | 9 | 10 | 12 | 12 |
| | ● | - | 1 | 1 | 1 | 1 | 2 | 2 | 2 |

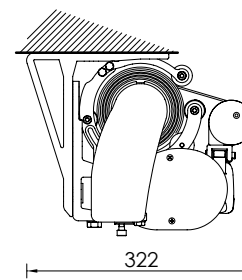
Wall installation



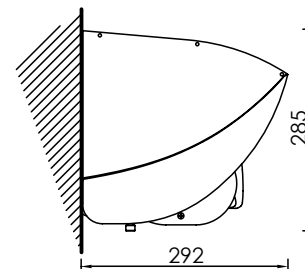
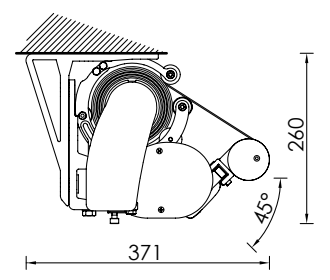
Wall installation 45°



Ceiling installation



Ceiling installation 45°



Installation with a hood