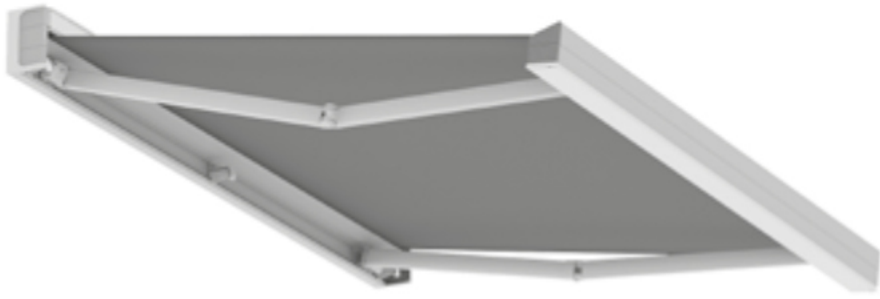
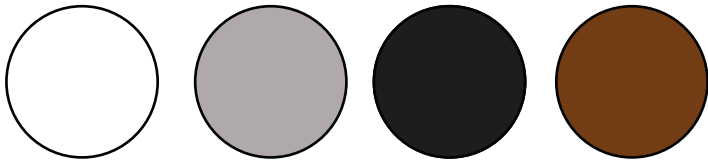


# Qubica Plumb & Qubica Plumb with AKI LED Technical Information

1	

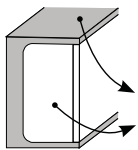


## COLOURS RAL



Standard 9010 WHITE      9006 ALUMINIUM      CARBON      CORTEN

## COLOUR COMBINATIONS



	C1	C2	C3	C4	C5	C6	C7	C8	C9	C10BA	C11	C12	C13	C14	C15	C16
9010	9010	9010	9010	9010	9006	9006	9006	9006	CARBON	CARBON	CARBON	CARBON	CORTEN	CORTEN	CORTEN	CORTEN
9010	9006	CARBON	CORTEN	9006	9010	CARBON	CORTEN	CARBON	9010	9006	CORTEN	CORTEN	9010	9006	CARBON	

- Arms
- ▶ Kit conveyer
- Arm support -wall or ceiling bracket

cm											
		400	500	600	700	800	900	1000	1100	1200	
160	■	2	2	2	4	4	4	4	6	6	
	▶	2	3	3	5	5	5	5	7	7	
	■	2	2	2	4	4	4	4	6	6	
185	■	2	2	2	4	4	4	4	6	6	
	▶	2	2	2	5	5	5	5	7	7	
	■	2	3	3	4	4	4	4	6	6	
210	■	2	2	2	4	4	4	4	6	6	
	▶	2	2	2	5	5	5	5	7	7	
	■	2	3	3	4	4	4	4	6	6	
235	■	2	2	2	4	4	4	4	6	6	
	▶	2	3	3	5	5	5	5	7	7	
	■	2	2	2	4	4	4	4	6	6	
260	■	2	2	2	3	4	4	4	6	6	
	▶	2	3	3	4	5	5	5	7	7	
	■	2	2	2	3	4	4	4	6	6	
310	■	2	2	2	3	3	4	4	5	5	
	▶	3	3	3	4	4	5	5	6	6	
	■	2	2	2	3	3	4	4	5	5	
360	■	-	2	2	2	3	3	4	4	5	
	▶	-	3	3	3	4	4	5	5	6	
	■	-	2	2	2	3	3	4	4	5	
410	■	-	2	2	2	3	3	3	4	4	
	▶	-	3	3	3	4	4	4	5	5	
	■	-	2	2	2	3	3	3	4	4	
435	■	-	2	2	2	2/3	3	3	4	4	
	▶	-	3	3	3	3/4	4	4	5	5	
	■	-	2	2	2	2/3	3	3	4	4	

Minimum awning encumbrances -  
1 pair standard arms  
For AKI LED Arms add 20cm to the width

cm		
160		221
185		146
210		271
235		296
260		321
310		371
360		423
410		473
435		498

N.B. Fabric welded as standard

## Wall covering diagram

